

Pohangina

Domain



+



Pohangina

Domain

Contents

Introduction and Background

Project Drivers

Design Principles - arising from background work

The Landscape Development Concept Plan

Implementing the Plan



Introduction and Background

The concept document is intended to help guide future management and development of Pohangina Domain.

Pohangina Domain is located 30 minutes by car east of Feilding Township and a similar driving time north of Palmerston North City.

This concept document has been prepared by Peter Shore (Purple Dot Solutions) and Bruce Court (Be Creative). It is intended to be used as a guiding document for discussion and development of the Pohangina Domain and public areas.

Implementing the plan

The concept can and should be implemented in stages. The priorities will to a certain degree be determined by budgets (presumably funding applications). And the staging of the projects determined by the administering group.

A range of suggested projects is appended. Many project can and would be best implemented as part of community work. Planting for example could be incorporated into an annual educational project for arbor day or National Tree and Forest week.



The Manawātū District Council website describes the following:

“This 5.14ha reserve is a former cricket ground with cricket pavilion and specimen trees, including kahikatea. Large historic elms mark the road boundary. The domain is grazed and its main use at present is for picnicking and car parking for people walking the Council Branch Road Walkway (Pohangina), which begins at the domain. The open spaces are used by local children”.

The domain appears to be first gazetted for reserve purposes in the late 1800's



Reserve Management Plan

In 2006 the Manawātū District Council produced a District Wide Reserve Management Plan (RMP) which included Pohangina Domain. Within the RMP, Pohangina Domain is categorised under the rural facilities section, where it states that:

“rural facilities include former schools, their grounds and domains. These reserves have a number of facilities including community buildings, swimming pools, tennis courts, playgrounds, sports pavilions and two reserves have small grandstands. They are generally looked after by their local communities.”

General Description

The reserve is a former cricket ground with cricket pavilion, toilets and specimen trees, including kahikatea. Large historic elms mark the road boundary. The domain is grazed and its main use at present is for picnicking and carparking for people walking the Council Branch Road Walkway - Pohangina, which begins at the domain. As with many rural domains, the site was previously used by the local community for a range of recreational uses, including cricket. The old cricket pavilion and oval remain.

Policies

- 1) The use of the reserve will be investigated to establish whether the Manawatu District Council should retain the land as reserve land.
- 2) Guidelines will be developed for the use, maintenance and management of the pavilion.
- 3) Inclusion of the pavilion in the District Plan as a heritage building will be investigated.
- 4) Kahikatea in the reserve will be protected from grazing animals.
- 5) Signs to inform the public that sections 32A and 32B are open for public use will be erected in line with the proposed parks and reserves sign guidelines.

Future Development

The RMP identified the following key pieces of work for the Domain:

- Investigate developing toilet facilities should use of the reserve increase.
- Investigate developing the pavilion to house historical photographs and local information.



Background

Project Drivers

Pohangina Valley Community Action Plan

The Community Planning process had been ongoing since 2013, and included community workshops, public exhibitions and events. The workshops focussed on establishing a shared vision for the future of the village and also focussed on opportunities for improvements. This information went into developing the draft Community Plan which was intended to summarise the vision and aspirations we have for our village and community.

In May 2014 the Pohangina Valley Community Committee undertook to produce Pohangina Valley Community Action Plan, jointly produced with the Manawātū District Council and Boffa Miskell Ltd.

The Community plan and the list of preferred actions were intended to help identify projects that could be presented to the Manawatu District Council for inclusion in future Council work plans.

Project Pohangina

The action plan reflected the work undertaken as part of the Project Pohangina initiative which ran from 2006 - 2009. The initiative which was jointly funded attempted to educate and gather opinions from the 1000 people living in the area.

Project Pohangina recognised the Pohangina Valley as an area of "nationally outstanding landscape quality". It sought to engage with council in determining its own future. The project was about getting the community to find its own way."

The collaborative work undertaken as part of Project Pohangina identified seven desired outcomes:

These were:

- 1: Stronger communities
- 2: Well-maintained community resources
- 3: Improved services
- 4: Caring for the environment
- 5: More opportunity for recreation
- 6: Viable livelihoods
- 7: Better regulations

Each of the seven outcomes has a number of objectives to help achieve the vision statement. A list of impacts have been identified and are used to measure how they relate to landscape, economic, environment, social and cultural values. From here an action plan has been established in order to achieving the specific seven outcomes.

Pohangina Valley Community Action Plan

A number of action plans arose from both the Project Pohangina work and the more recent community consultation. These included the following examples that relate to the future opportunities and development of Pohangina Domain.

Our river, water and wetlands

Ensure that Pohangina has the right strategies to protect, enhance and allow access to waterways and wetlands for our community and our visitors by providing recreational opportunities & links to our water, landscape & adjoining waterways

Our local vegetation and open space

We want to ensure that we protect and enhance our vegetation and open spaces for our community and our visitors:

- Establish well connected local walkways, cycleways and horse tracks (eg Beehive)
- Develop a Arboretum proposal
- Involve community in planting days
- Develop a vegetation strategy for the village core.

Our village core and facilities

- Develop recreational opportunities (e.g. cricket / playground for older children)
- Improve our domain and access to it

Design Principles

Project Pohangina recurring themes and values - the Domain and wider landscape

1. **Lifestyle:** There is a strong country lifestyle influence with working and hobby farms close by
2. **Natural:** The river valley and native forest have a very strong influence on the landscape character of the valley, and should be reflected in the development plans.
3. **Old World:** There is a strong european influence with old, large “Village Green” style plantings. The village has a “rustic charm” with a quiet and peaceful feel about it.
4. **Scale:** The scale of the roads and public spaces around the village feels personal and intimate
5. **Nostalgia:** Within the domain the cricket pavilion and oval reflect a by gone era
6. **Recreation and leisure:** The whole valley feels like a recreation oasis with opportunities for active and passive recreation. Maximise different experiences for domain visitors
7. **Real NZ:** There are practical considerations that can enhance the value of the domain as a visitor attraction such as grazing of sheep to manage the grass but also to reinforce the rural qualities of the site.
8. **Ecological:** Support ecological enhancement and protection
9. **Education:** Relate the story of the land and the people
10. **Environment:** Provide a quality environment that reflects the above themes and values with consistency and appropriate choice in materials

What a Landscape Development Plan needs to provide:

1. Guidelines for the ecological enhancement and protection of the domain
2. Opportunities that recognise and provide for and promote niche visitor experiences
3. A reflection of the Village character and macro landscape influences
4. Scope for a range of recreational and event opportunities for locals and visitors alike.
5. Detailed plans and guidelines for future development to ensure consistent and appropriate use of materials and end results.



photo: Makoura Lodge, 2017

The Landscape Development Plan

The Landscape Development Plan has been developed in partnership with the Pohangina Community Committee. Together the following principles have been formed to guide the development:

- Gain an understanding of the existing site & relevant other strategies and plans
- Establish principles and objectives for developing a Landscape Development Concept Plan
- Develop and explain concept ideas for implementation
- Establish priority actions and show these on the plan(s)
- Outline how to implement the plan in stages

Implementing the Plan

The following implementation points should be noted:

- Implementing the plan will not simply be a matter of following every recommendation or adhering to every design example. The site will change over time, as will the way the site may be used.
- Thinking about the design principles first and foremost will always help shape the answer to any new challenge.
- Adhere to consistency and err on the side of moderation as “less is often more”
- Ecological values and restoration.



Design Guidelines/Drivers

The Domain is a reflection of many things and has the potential to be a successful blend of opportunities including ecological restoration, heritage restoration and recreational development. It will be important to maintain a balance between ecological restoration and development work required to reconnect with its past and to realise its future.

Establishing and adhering to design guidelines will go a long way to ensuring that the wider communities aspirations are met.

Ecological Restoration of the Domain

Creating different areas and styles of restoration planting across the domain.

Creating a range of different opportunities within the domain for different types of use (from picnics and short walks to theme events).

Connections

Ensuring that Pohangina Domain links effectively and in a meaningful way with the wider recreational network of sites within the Pohangina Valley.

Integrating information about Pohangina Domain and its history into the signage, seating and fences to reflect the character and charm of a bygone era.

Keeping the design simple

Recognise when enough is enough in terms of good design implementation. For example the use of old farm implements scattered under the road side trees could develop into a successful form of passive art attraction but using too many could change the experience from delight to scrap yard.

Materials and style

The materials and style guide for Pohangina Domain need to be of a consistent style and standard when any upgrade or enhancement is planned such as seating, signage, fences and boardwalks shelters, car parking etc.

Affordability and sustainability

It is important to make sure the domain can be managed sustainably and affordably and therefore recognising the multiple values of grazing sheep is important. There needs to be an appropriate area set aside for a loading ramp and yards. These assets can and should be viewed as not only a practical need but also a passive recreational asset. How many city kids would love to watch stock dogs rounding up sheep for transporting. Installing interpretation and information signs on assets such as this will only enhance the visitor experience.



photo: Makoura Lodge, 2017

Master Plan

The Master Plan sets out to provide an over-arching spatial framework that articulates and applies the principles to the domain.

The Master Plan drawing is intended to be used as a guide. Further detail of specific projects will require further planning and design prior to implementation.

The various images and ideas throughout the plan are intended to show the potential of adhering to a consistent palette of materials and using functional domain infrastructure, such as benches, boardwalks and shelter to help inform character and identity to the domain.

The materials shown in these ideas draw from the existing site, whilst providing something distinctive to Pohangina Domain.

Suggested materials are:

- River stones to reflect the proximity of the Pohangina river and Corten Steel: to reflect the age and longevity of the domain.
- Gravel paths: use local and appropriate materials such as gravel within the domain and timber boardwalks where necessary with directional signs on round posts to reflect rural feel.
- Shelters & Signage Boardwalk treatment and signage: Entrance signage and edge treatments.





	Boundary
	Walking Track
	Wire & Batten Fence
	Stone Wall
	Rustic Post Bollards
	Picket Fence
	Low Fence
	Steps
	New Planting Indicative only

Main Pedestrian Entrance

Main pedestrian entrance is between newly created riverstone walls and arbor. Two rustic wooden bollards are to prevent vehicle access.



Entrance/Carpark

Entrance to the carpark is shown here between low rise posts and rails. Vehicle access to the oval is prevented by the further use of rails around the perimeter of the stone and gravel carpark. A picnic area can be created between the rails and the fence enclosing the oval.

Entrance to the oval is via the pavilion which will house historical information relating to the Pohangina Domain.

Old cart wheels or farm implements can be added to this area for further interest.



Carpark

Open space for car parking via entrance between white painted or natural timber low riser post and rails.

Main pedestrian entrance between riverstone wall.

Vehicle access to Oval and Domain is prevented by further low rise post and rails, and provides space for picnic tables between the carpark and oval.

Area provides potential for the addition of a period style riverstone wood fired BBQ (with steel plates) to compliment picnic tables.

Access to Oval is via Pavilion entrance.

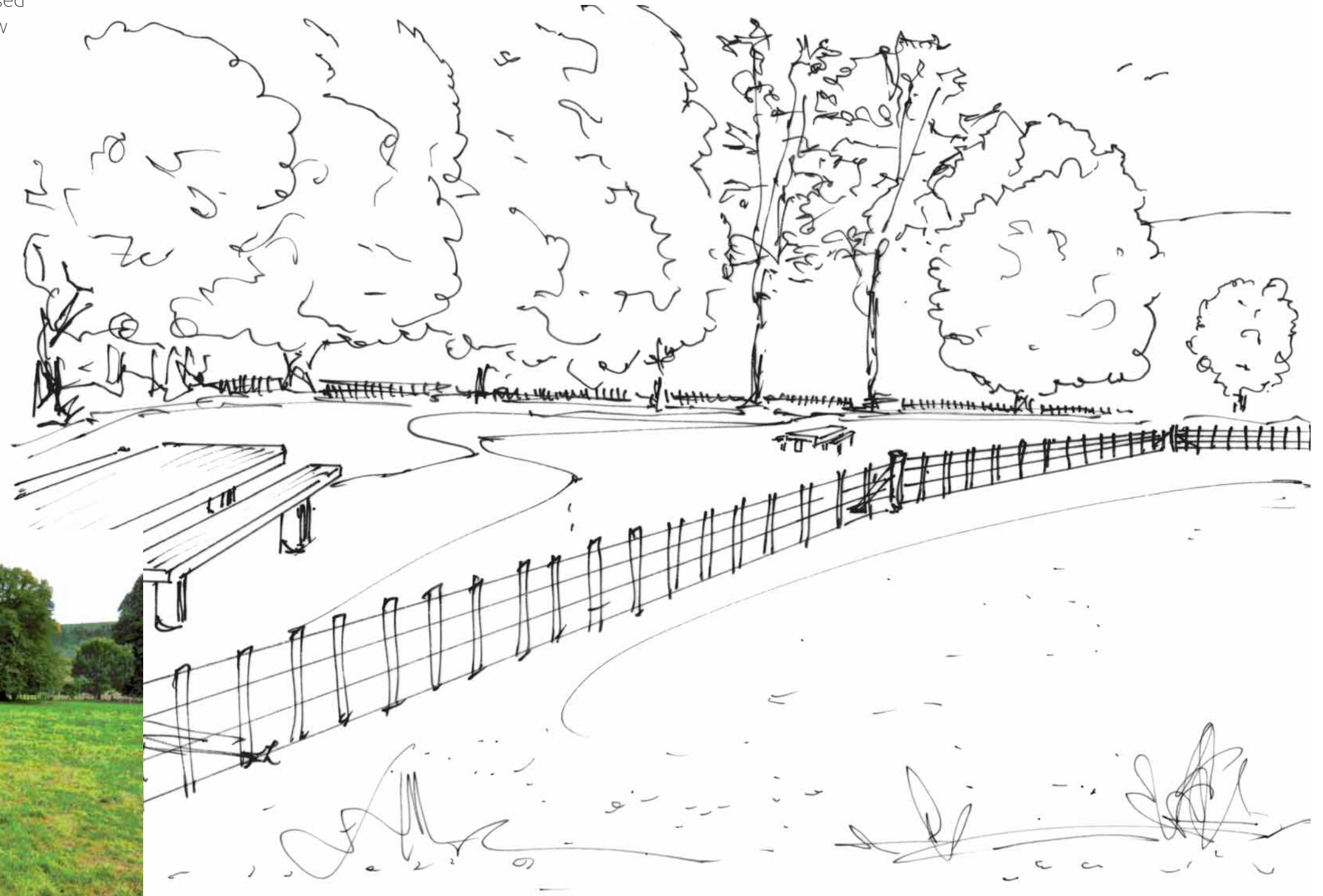


Walkway to picnic areas

Erect a new wire and batten fence around the fringe of the oval in the south west corner to create additional recreational space and picnic areas that are protected from stock.

The track leads from the existing pavilion and proposed carpark, looping around established trees with a few old farm implements placed throughout the area to add interest.

Newly erected picnic tables in this area will have an ideal vista of the oval and extended domain.



Side Entrance

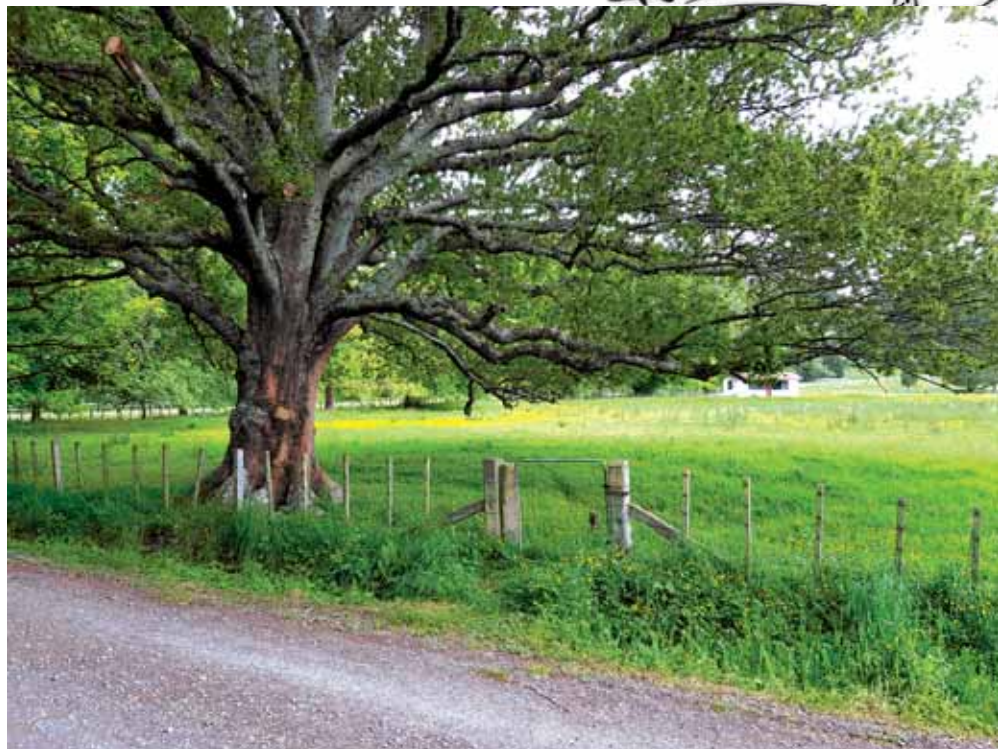
Side Entrance to mimic that of the Main Entrance.

Stone gravel walkway from Pavilion following the front and side boundaries but winding between established trees.

Picnic tables off the track, interspersed with old farm implements to add adventure and interest.

Side entrance provides left hand access to the Pavilion or right hand access to circumnavigate the Oval or pursue the longer track..

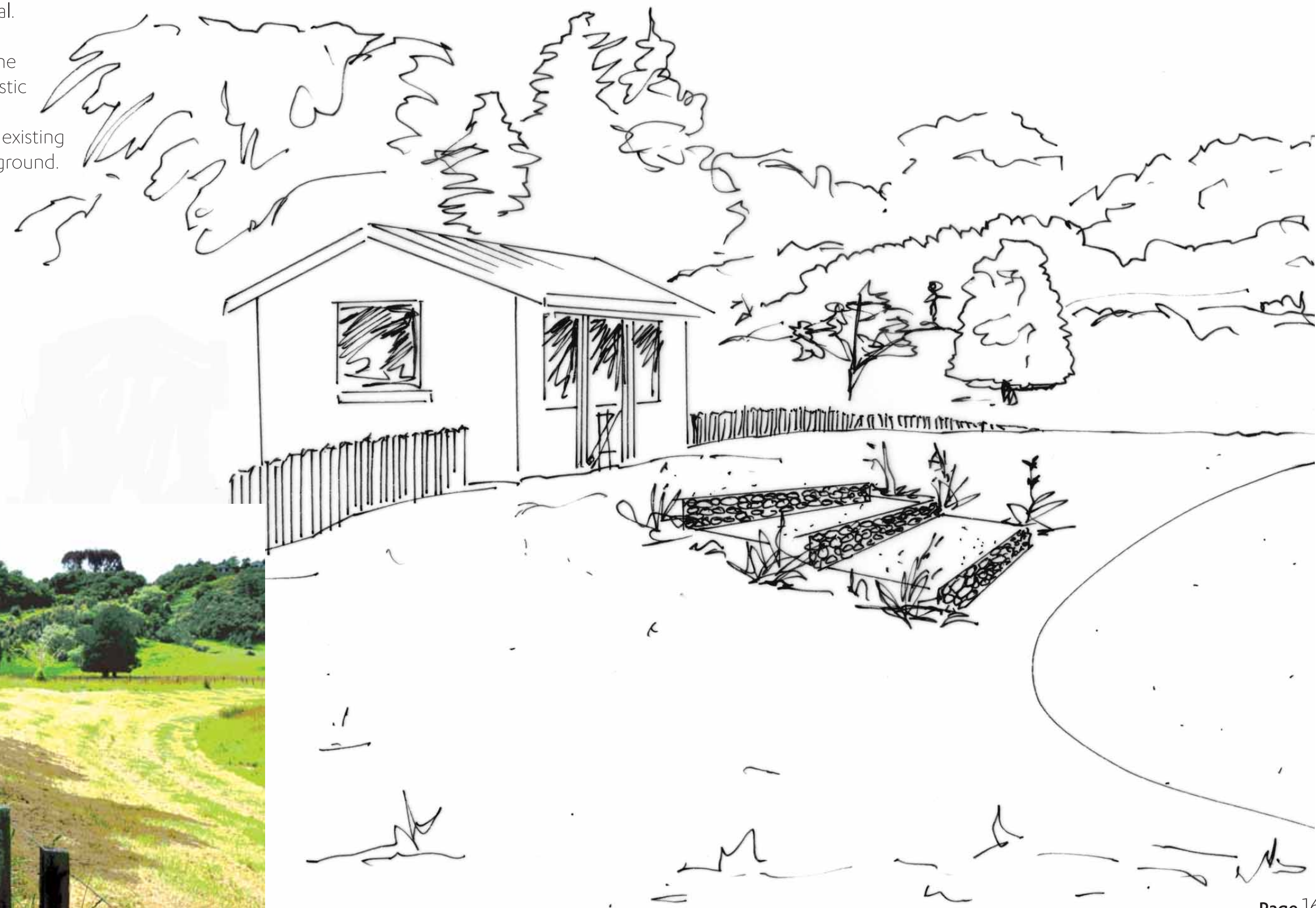
Create boardwalk across drainage ditch to driveway and erect a rustic wooden gate between river stone columns.



Pavilion

Refurbish existing Pavilion, add white picket fence to enhance the appearance of a Cricket Oval. Position small picket fences around the outer oval as protection for new plantings. These small pickets around the oval will further accentuate the appearance of a cricket oval.

We propose the construction of a riverstone columned entrance way, complete with rustic gate and arbor. Similarly, riverstone steps can be located immediately in front of the existing pavilion to provide an access point to the ground.



Inside Pavilion

Add central entrance from roadside carpark via the Pavilion's back wall.

Paint and refurbish the interior but retain rustic qualities of Pavilion's corrugated iron and exposed timbers.

Internal walls provide a protected space for historical photos and relevant information on the Pohangina Domain.

The inside of the Pavilion offers shelter and an impressive vista through to the outer Oval.

Access to the Oval is via the existing front gate at the front of the Pavilion.



Pohangina

Domain



Boardwalks

Introduce boardwalks to provide level access across wet areas and drains.
Enhance these areas with additional planting of native flax and grasses.



Upper Walkway

Form a walkway across the greater area of the Pohangina Domain.

This will run from the oval track, out across farmland, over boardwalks in wet areas or drains, then through existing native and new native plantings across the upper section of the Domain.

Walkway would be constructed using local and appropriate materials such as gravel within the Domain and timber boardwalks and where necessary, directional signs on round posts to reflect the rural feel.



Setting the scene

Projects (in no particular order)

- New Stock Yard
- Renovation of Cricket Pavilion
- New Domain Sign
- Interpretive Signs
- Boardwalks over wet areas
- Tree planting around oval
- Revegetation and limited amenity work
- River stone/gravel pathway around oval
- Picket Fence and Tree Guards
- Designated off road parking area



Pohangina Domain

Implementing the plan

The concept can and should be implemented in stages. The priorities will to a certain degree be determined by budgets (presumably funding applications). And the staging of the projects determined by the administering group.

A range of suggested projects is appended. Many project can and would be best implemented as part of communitiy work. Planting for example could be incorporated into an annual educational project for arbor day or National Tree and Forest week.

SHORT TERM PROJECTS

- Secure stockyard and loading area
- New signage and iterpretation panels throughout site
- Develop new entrance way and carpark area
- Develop a short link trail from domain entrance, following Elms past strategically placed farm implements to side entrance or loop around oval
- Picnic tables and seating

LONG TERM PROJECTS:

- Develop trails beyond oval accross paddocks, through native hillside plantings and back to pavilion and carpark
- Construction of boardwalks over wet areas and drains accross outer domain walkway
- Renovation of cricket pavilion and instalation of historical information
- Revegetation of the existing podocarp forest margins
- Road fence removal and placement of low level post and rail barriers
- Eco sourcing for production of ongoing supply for revegetation of the domain
- Installation of a period style wood fired BBQ (with steel plates)
- Riverstone steps down from pavillion to oval



Revegetation Plan - not for Oval or around Pavilion or entranceway

Range and types of plants to use and when...

Stage 1 Pioneer plants (First 1 - 3 Year Planting)

Cordateria - Toe Toe	Coprosma lucida	Macropiper excelsum - Kawakawa
Aristolelia serrata - Mako mako	Coprosma tenuifolia	Melyctus ramifolius - Mahoe
Brachlyglottis repanda - Rangiora	Coprosma robusta	Myrsine australis
Carmichaelia arborea	Dodonaea viscosa - Akeake	Psuedopanax arboreus - 5 Finger
Carpodetus serratus - Putaputa weta	Fushia excordata - Fushia	Psuedopanax crassifolius - Lancewood
Cordyline australis - Cabbage Tree	Griselinia lucida - Puka	Psuedowintera collorata - Pepper tree
Cordyline banksii	Hebe stricta - Hebe	Sophora microphylla - Kowhai
Coprosma grandifolia	Manuka	Rhopalostylis sapida - Nikau



Stage 2 Secondary plantings - and forest fringe plants (Years 3 - 10)

Alectryon excelsus - Titoki	Elaeocarpus hookerianus	Plagianthus regius - Ribbonwood
Aristolelia serrata - Mako mako	Fushia excordata - Fushia	Psuedopanax arboreus - 5 Finger
Brachlyglottis repanda - Rangiora	Griselinia lucida Puka	Psuedopanax crassifolius - Lancewood
Carpodetus serratus - Putaputa weta	Hedycarya arborea	Psuedowintera collorata - Pepper tree
Cordyline australis - Cabbage Tree	Kanuka	Schefflera digitata - Pate
Cordyline banksii	Lophomyrtus bullata - Ramarama	Sophora microphylla - Kowhai
Coprosma lucida	Lophomyrtus obcordata	Rhopalostylis sapida - Nikau
Coprosma robusta	Melyctus ramifolius - Mahoe	
Coprosma tenuifolia	Myrsine australis	
Coprosma crasifolia	Myrsine salicina	
Cyathodes juniperina - Mingi mingi	Oleria paniculata - Akiraho	
Dodonaea viscosa - Akeake	Pittosporum eugeniioides - Tarata	
Elaeocarpus dentatus - Hinau	Pittosporum tenuifolium - Matipo	



Stage 3 Climax vegetation - requiring shade/shelter (Years 10 Onwards)

Adiantum cunninghamiiMaidenhair fern	Flagelliformus hookeri	Nothofagus solandri - Black Beech
Asplenium bulbiferum Mother fern	Hoheria populnea - Lacebark	Podocarpus totara - Totara
Asplenium - other species	Knightia excelsa - Rewarewa	Prumnopitys ferruginea - Miro
Blechnum species (4) - Ferns	Laurelia novae-zealandiae - Pukatea	Prumnopitys taxifolia - Matai
Beilschmiedia tawa - Tawa	Metrosideros robusta - Rata	Weinmannia racemosa - Kamahi
Dacrycarpus dacrydioides - Kahikatea	Nestegia cunninghamii - Black maire	Dacrydium cupressium - Rimu
Elaeocarpus dentatus - Hinau	Nestegia lanceolata	Rhopalostylis sapida - Nikau

